

# OWNER'S MANUAL



Model:  
**800-TRL50PROST**  
**(5303056)**

(50 Gallon Professional  
Lawn & Garden  
Trailer Sprayer)

**Professional Grade Pump (4.0 GPM):**  
Ideal for Harsh Chemicals & Oil  
Based Chemicals with Surfactants

**Long Range 22" PRO SERIES Handgun**  
38' Horizontal Spray & 27' Vertical

**Roundup® Ready**

## General Information

Thank you for purchasing this product. The purpose of this manual is to assist you in operating and maintaining your lawn & garden trailer sprayer.



**WARNING:** To reduce the risk of injury, the user must read and understand the operator's manual before using this product.



**WARNING:** Cancer and Reproductive Harm  
[www.P65Warnings.ca.gov](http://www.P65Warnings.ca.gov)

**BEFORE RETURNING THIS PRODUCT  
FOR ANY REASON, PLEASE CALL**

**1-870-935-3291**

If you should have a question or experience a problem with your SMA Product: call the Toll free number above. Our technical support representatives will be happy to help you. In most cases a customer service rep. can resolve the problem over the phone.

To obtain prompt, efficient service, always remember to give the following information....

- Correct Part Description and/or part number
- Model number and Serial Number

Part descriptions and numbers can be obtained from the illustrated parts list section(s) of this manual.

**Retain a copy of your receipt for your unit, as it will be required to validate any warranty service.**

**Warranted against manufacturer or workmanship defects from date of purchase with copy of receipt:**

**Homeowner Usage: One Year**  
**Commercial Usage: 90 Days.**

## Technical Specifications

- 50 Gal. Corrosion-Resistant Polyethylene Tank
- Pro Series 4.0 GPM, 45 PSI, 12 Volt Pump
- 7-Nozzle Adjustable Height Boom (140" Spray Coverage)
- Fold-Away Outer Boom Members
- Drift Reducing Corrosion-Resistant Nozzles with "No-Drip" Check Valve Strainers
- 18 x 8.5 x 8 Turf Tires
- Multi-Lid



**NOTE:** Maximum Speed - 10 MPH  
Refer to vehicle's manual for towing instructions

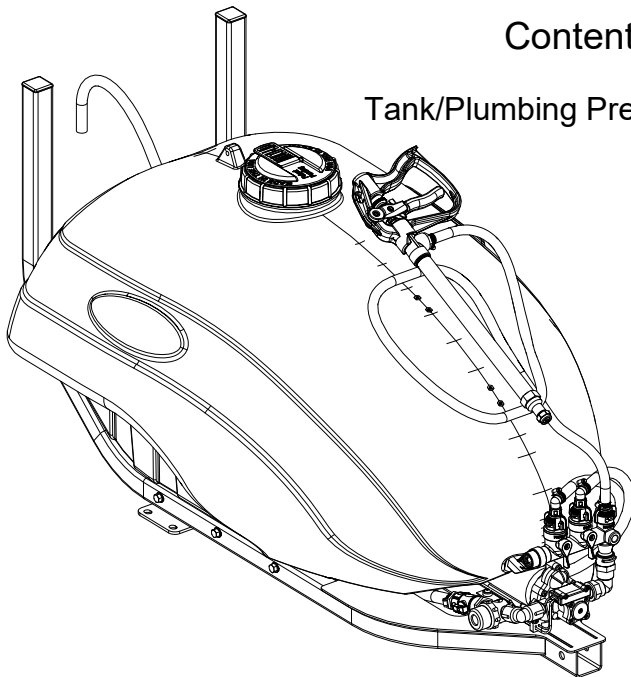
## Assembly Instructions

- Make sure the contents of the sprayers carton match the items shown on page 2 of the manual.
- Follow the steps on pages 3, 4 & 5 to properly assemble the sprayer.



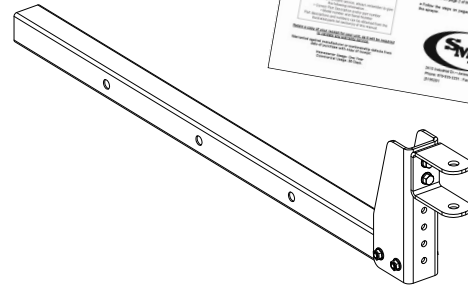
#1 Walter Kratz Drive—Jonesboro, AR 72401  
Phone: 870-935-3291 : Fax: 870-935-5651  
[5195201 (08/19)]

## Contents of your sprayer's carton (800-TRL50PROST)

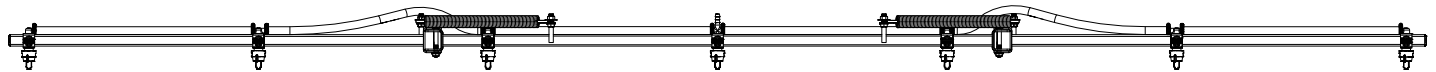


Tank/Plumbing Pre-Assembly

Owner's Manual



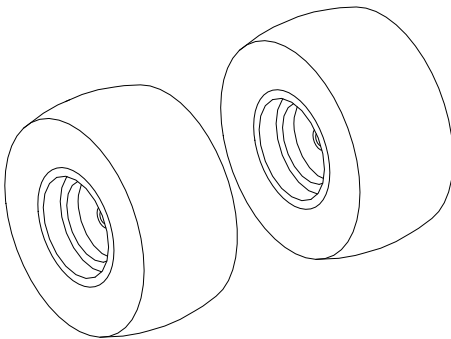
Tongue Assembly



7 Nozzle Boom

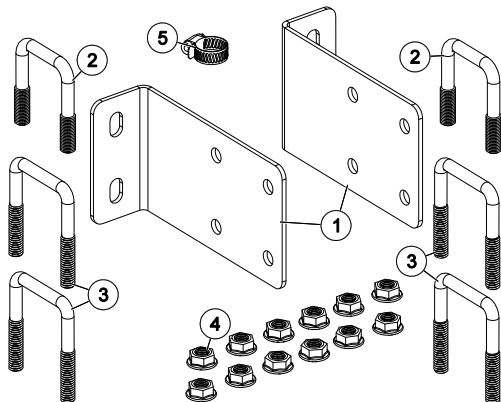


1" x 32"  
Axle Shaft



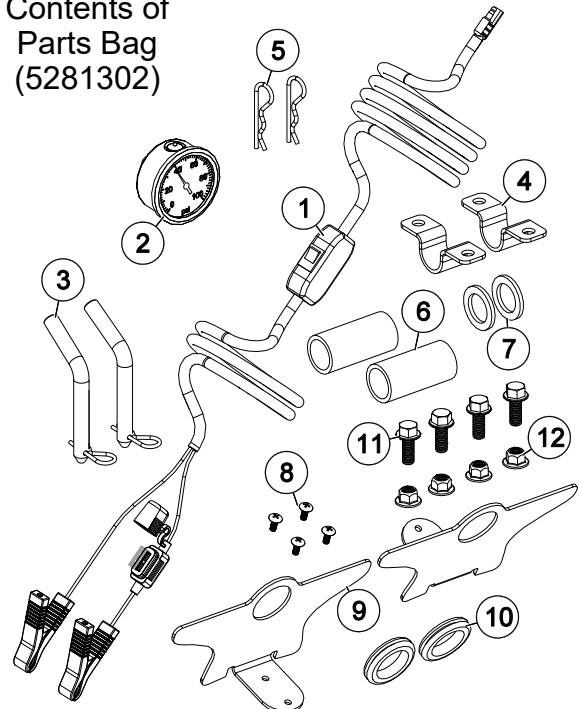
Turf  
Tires

Boom Mount Kit (#5281303)

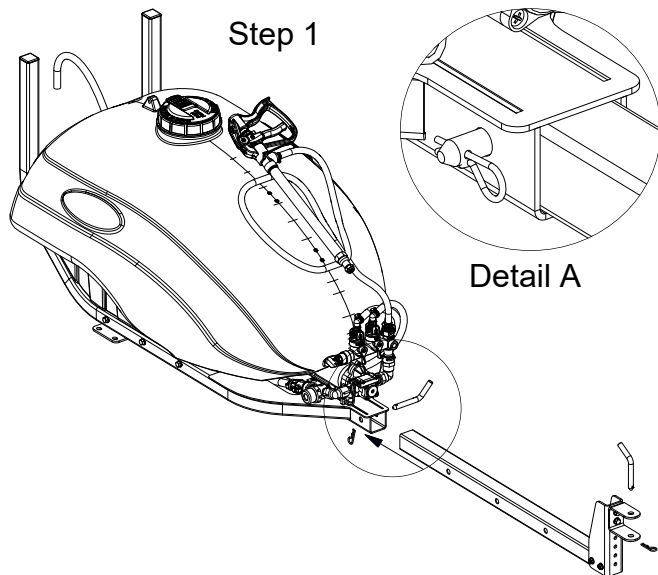


Ref. #	Part #	Description	Qty
1	5095944	50 Gal. Trailer Boom Mount	2
2	5034159	Square U-Bolt, 5/16" x 1 5/16" x 1 7/8"	2
3	5034832	Square U-Bolt, 5/16-18" x 1 9/16" x 2 3/16"	4
4	5006307	5/16-18nc Hex Flanged Whiz Nut Gr. 5	12
5	5051144	Hose Clamp, 3/8"	1

Contents of  
Parts Bag  
(5281302)



Ref. #	Part #	Description	Qty
1	5277040	Lead Wire Assembly (14 ga, w/Switch), 120"	1
1.1	5157238	15 Amp Regular Blade Fuse	1
2	5167108	2 1/2" Liquid Filled 100# Back Mount Gauge	1
3	5101202	Bent Clevis Pin (1/2" Dia.) w/Clip	2
4	5051160	1" Axle Clamp	2
5	5101065	#211 Hitch Pin Clip (Zinc Plated)	2
6	5127236	Axle Spacer - 1" SCH 40 RPVC X 2.6875"	2
7	5041113	Machinery Bushing, 1 1/2" O.D. x 1" I.D. x 10 Ga.	2
8	5117234	#10-24 x 1/2" Phillips Truss Head Machine Screw	4
9	5038923	HP Gun Hose Wrap Bracket Upper	2
10	5075014	Rubber Grommet (Black)	2
11	5117307	H.H.C.S. Flanged 3/8"-16nc x 1"	4
12	5006345	3/8-16nc Hex Flanged Toplock Nut Gr. 5	4



Step 1

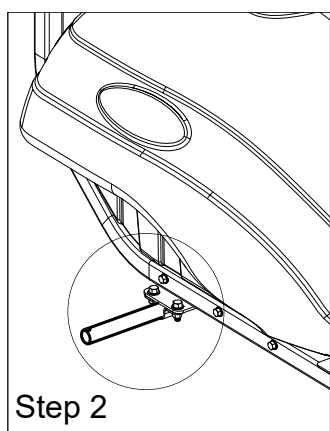
Detail A

Your tank comes already mounted to the main frame and pre-assembled with the pump, manifold, bypass, intake assembly, lid, handgun, handgun hose and handgun hose quick connect already attached.

Assembling the tongue to the frame. Locate the (2) bent clevis pins from the parts bag.

Slide the preassembled tongue into the receiver of the main frame and lock in place with one bent clevis pin, securing with the clip (See Detail A).

Insert the other bent clevis pin into the hole in the hitch and secure with clip.

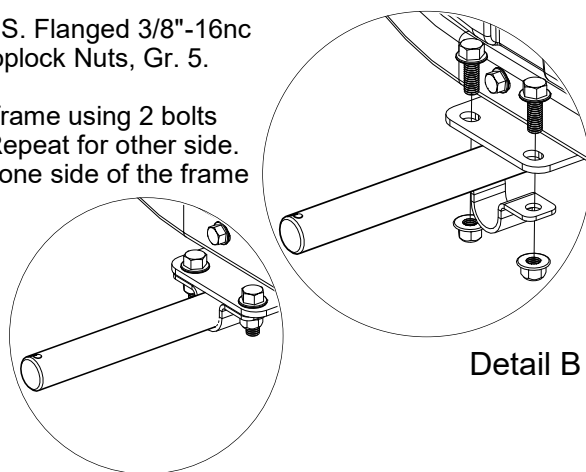


Step 2

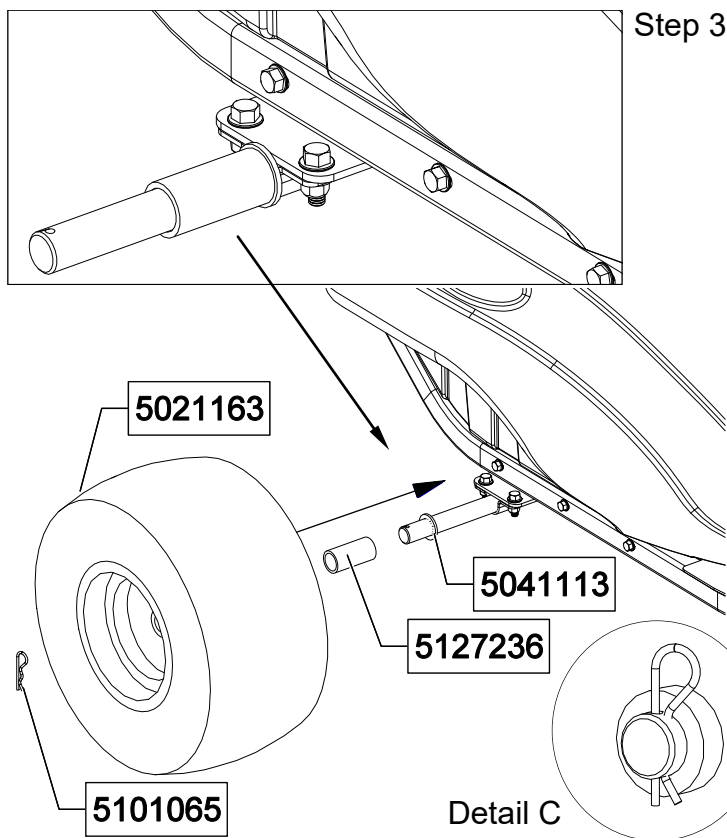
Locate axle, (2) 1" Axle Clamps, (4) H.H.C.S. Flanged 3/8"-16nc x 1" bolts and (4) 3/8-16nc Hex Flanged Toplock Nuts, Gr. 5.

Loosely attach the axle clamp to the main frame using 2 bolts and 2 nuts, do not tighten (See Detail B). Repeat for other side. Slide the axle through the 1" axle clamp in one side of the frame and through the corresponding hole on the other side, being sure to center the axle. Tighten the bolts and nuts.

NOTE: the axle will not turn or slide once the bolts are tight.



Detail B



Step 3

Locate the (2) axle spacers, (2) machine bushings, (2) hitch pin clips and (2) turf tires.

Slide a machine bushing and axle spacer onto the axle.

Slide the wheel onto the axle, making sure the valve stem is facing outward.

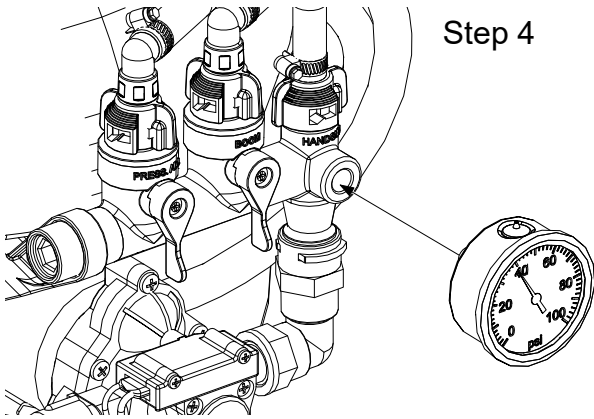
Retain the wheel on the axle with the hitch pin (See Detail C).

Repeat for other side.

**NOTE:** The wheels have grease zerks for bearings. After the wheels are installed, the bearings should be filled with a NGLI No. 2 lithium grease. Once a year new grease should be added to each wheel.

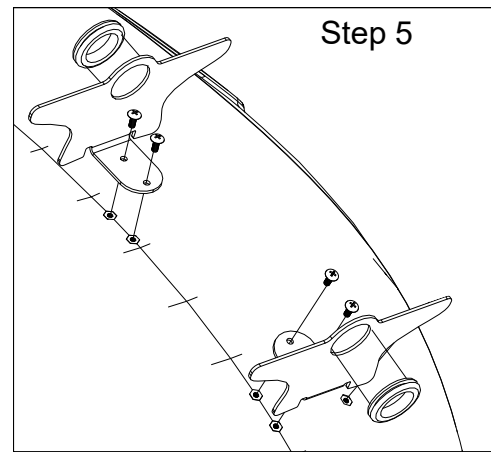


**NOTE:** Maximum Speed - 10 MPH  
Refer to vehicle's manual for towing instructions



Step 4

Install the pressure gauge. Hand tighten securely.  
**\*\* DO NOT OVER-TIGHTEN \*\***



Step 5

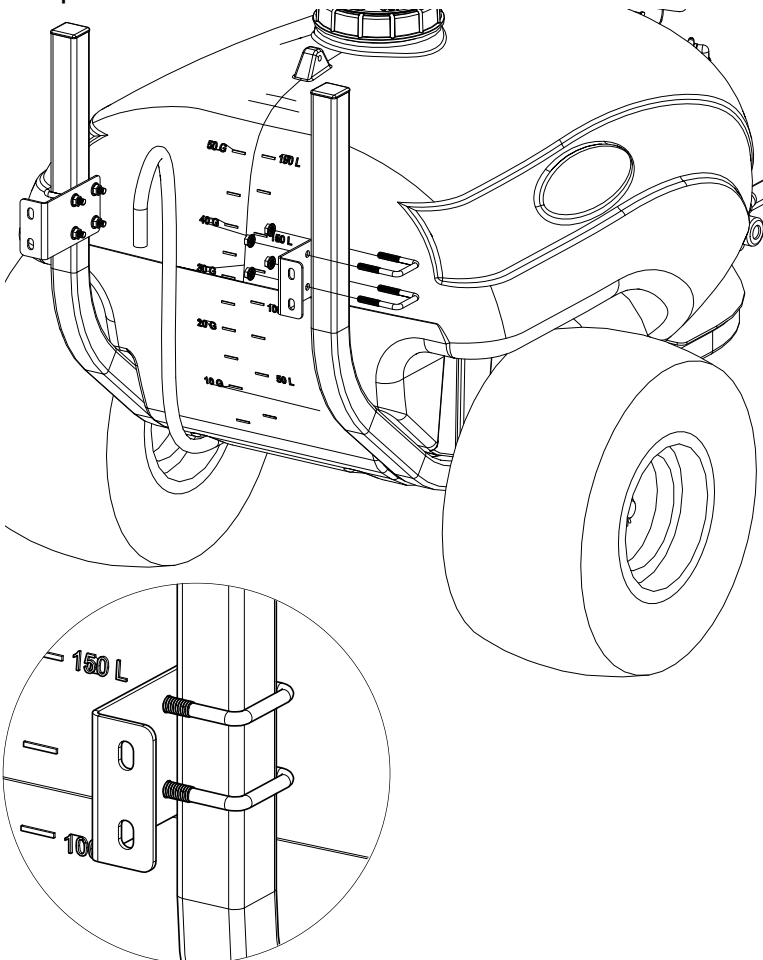
• A phillips head screwdriver is required for this step

Locate the (4) #10 x 1/2" screws, (2) hose wraps and (2) rubber grommets.

Insert the rubber grommets into the hose wraps. Place a screw through the holes in the hose wrap and bring it up to the tank. Secure the holders in place.  
**\*\*Do Not Over-Tighten\*\***

Wrap the hose and slip in the handgun.

Step 6

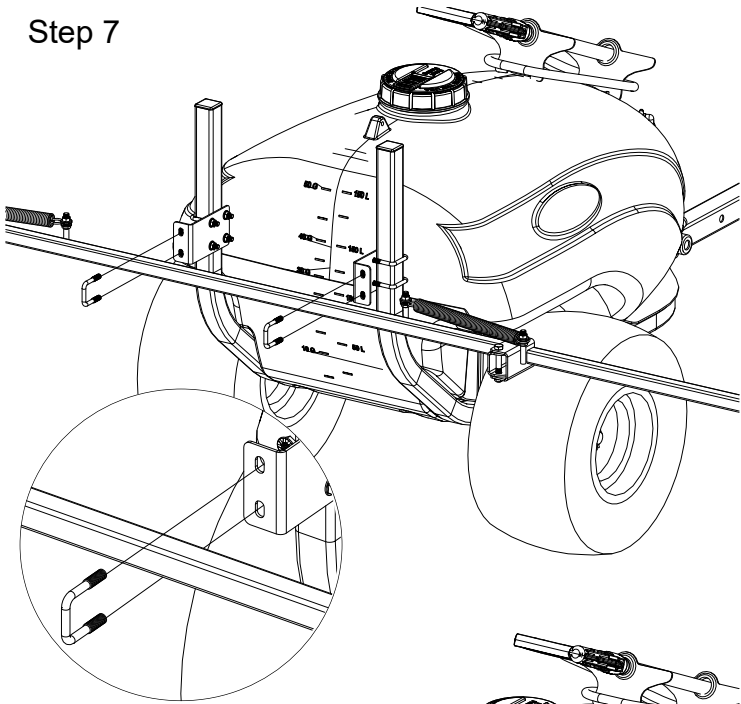


Locate the (2) boom mount brackets, (4) 5/16"-18 x 9/16" x 2-3/16" square u-bolts and (8) 5/16"-18 hex whiz nuts.

Mount the boom mount brackets on the upright boom arms as shown.

You can position them as needed, just be sure that they are even with each other.

## Step 7



After your boom mount brackets are secured in place. Bolt the 7-nozzle boom in place with (2) Square U-Bolts and (4) whiz nuts.

**A 1/2" socket or wrench is required for this step.**

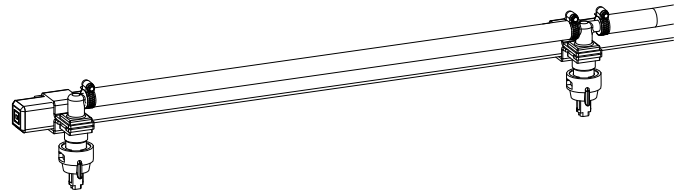
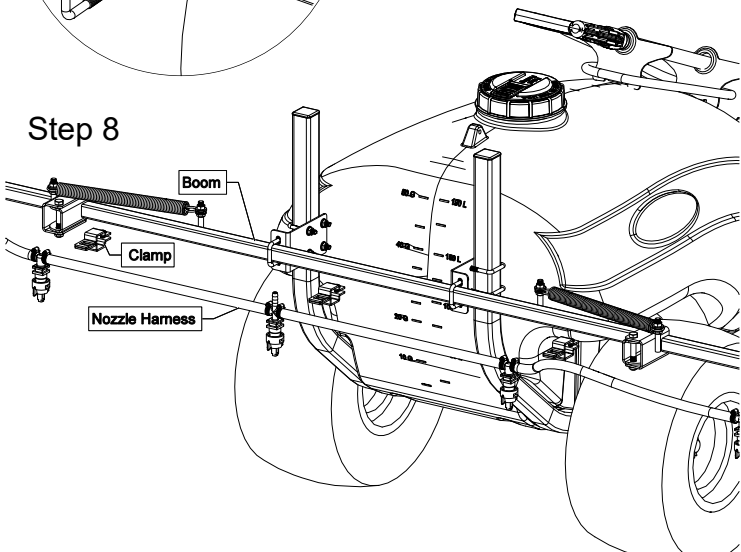
Try to maintain approximately 18-22 inches above the items being sprayed, for optimal coverage. This is considered where the nozzles will mount, at the end of these brackets.

With the boom secured to the boom mount, the nozzle harness can now be attached.

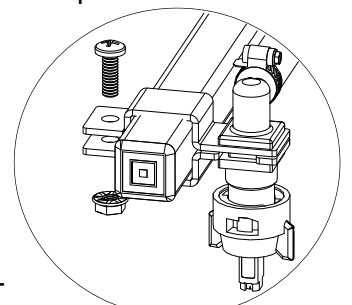
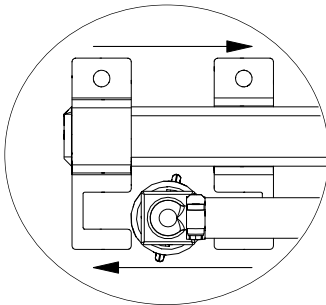
Attach the nozzle harness to the boom.

Starting with the center nozzle, center the nozzle harness on the boom and then work out to the ends on both sides using the nozzle clamps, attach the harness to the boom as shown in DETAIL Clamp.

## Step 8

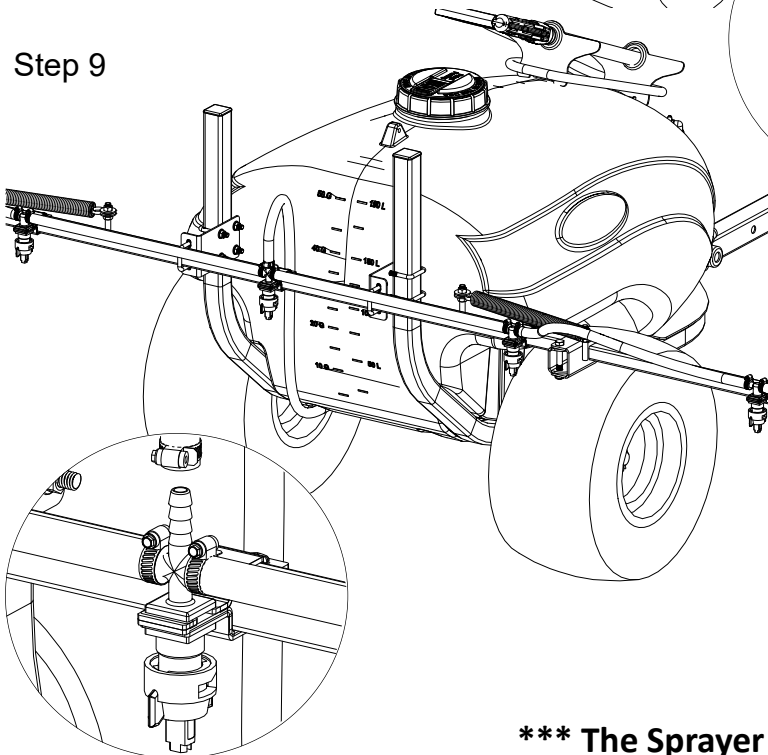


DETAIL Clamp



After

## Step 9



your nozzle harness is attached to the boom, attach the feeder hose with a hose clamp to the center nozzle.

Place the hose clamp over the end of the hose loosely. Slip the end of the hose over the hose barb on the 'CROSS' fitting on the nozzle harness. Use a twisting motion, if necessary, to get the hose fully onto each barb. Bring the hose clamp to the connection point and tighten securely.

**\*\*\* The Sprayer should now be ready for use \*\*\***



**IMPORTANT:** Remove tank lid and be sure the tank is clean and free of any foreign material. Rinse tank out of any tank residue before filling with water to test.

### Testing the Sprayer

#### NOTE:

It is VERY important for you to test your sprayer with plain water before actual spraying is attempted. This will enable you to check the sprayer for leaks without the possibility of losing any expensive chemicals.

Fill the tank about 1/2 full with plain water and drive to the starting place for spraying.

When you are ready to spray, turn the boom valve to the "on" position (Detail A). This will start solution spraying from the tips of the boom. The pressure will decrease slightly when the boom is spraying.

Adjust the pressure by turning the "ON/OFF" valve lever on the bypass line valve (Detail B). Make sure your pattern is sufficient. You may down-pressure the system by 'bypassing' solution back into the tank. This is achieved by opening the bypass valve. Regulating pressure is done in this manner.

Read the operating instructions and initially begin spraying by closing the 'Pressure Adjust' valve and opening the boom line valve (Detail A). This will enable the air in the line to be eliminated (purged) through all the tips, while building pressure. When everything tests all right (no leaks and good pressure), add the desired chemicals to the mixture and water combination and start your spraying operation. Adjust the pressure and spray as you did in the testing procedure.

Conditions of weather and terrain must be considered when setting the sprayer. Do not spray on windy days. Protective clothing must be worn in some cases.

**Be sure to read the chemical label(s) before application!**

### Operation

The pumping system draws solution from the tank, through the strainer and to the pump. The pump forces the solution under pressure to the handgun or boom nozzles.

Connect the lead wire to a fully charged 12 volt battery. You may use either a stand-alone battery or the battery on your towing vehicle. Connect to the positive (red) terminal first, then connect to the negative (black) terminal. Then connect the end of the lead wire to the end of the pump. When disconnecting, disconnect the end of the pump wire from the lead wire, then disconnect the negative (black) connection and finally the positive (red) connection. The lead wire has an On/Off switch to activate the pump. "-" is on and "O" is off.

Fill the tank part way with water and then add the desired amount of chemical to be sprayed. Finish filling tank to proper level. Turn the pump on and by depressing the "-" side of the rocker switch. The pump is equipped with a pressure switch that is pre-set at the factory to shut the pump off when all discharges are closed.

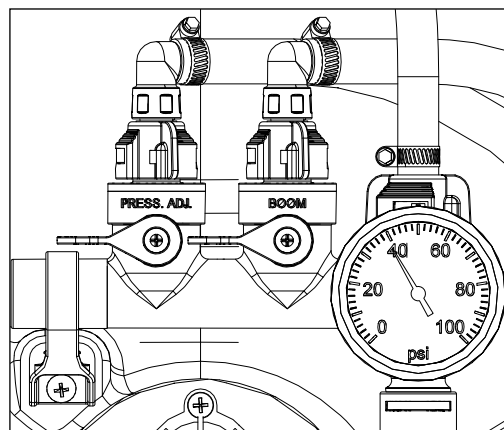
The pump will turn back on when one of the following actions occurs:

- ♦ Handgun lever is squeezed to spray the handgun.
- ♦ Boom valve is opened to broadcast spray with the boom.
- ♦ Bypass valve is opened to re-circulate solution back into the tank.

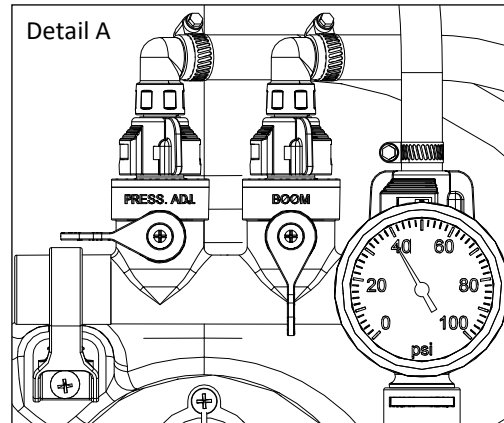
When spraying with either the boom or the handgun, pressure may be reduced by slowly opening the bypass valve until desired pressure is achieved. Opening the valve decreases pressure, closing the valve increases pressure. When spraying with the boom, the proper method to set the pressure is to open the boom valve completely and if a lower pressure is desired, then slowly open the bypass valve until that pressure is obtained.

For the safest and most efficient chemical application, you will need to calibrate your sprayer using the tip and speed charts. Once you have determined the proper speed and pressure settings, you will need to consult your chemical label for the amount of chemical to be added to the tank. Read the entire label. Use only according to label directions.

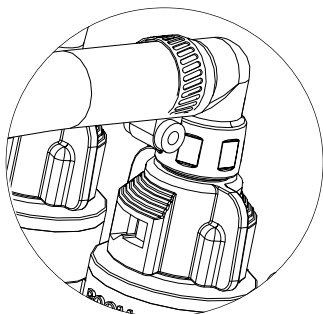
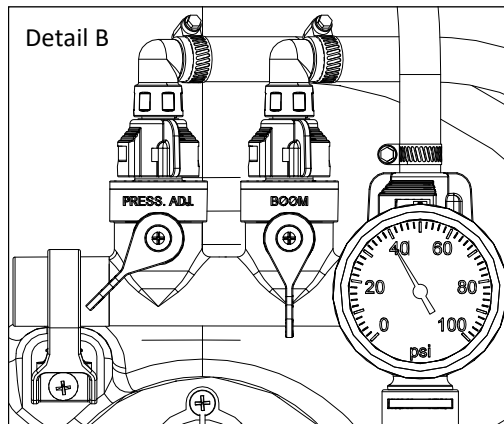
### Manifold Valves CLOSED



#### Detail A



#### Detail B

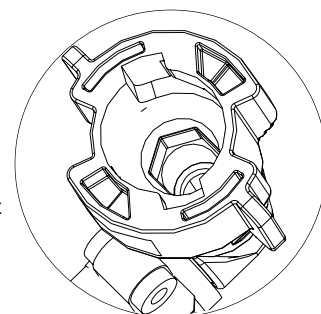


### Troubleshooting Leaking Elbow on Manifold:

If your manifold is leaking at the elbow connection, remove the elbow from the manifold. Quarter turn counter clockwise and lift off.

Look inside the cap and make sure the flat washer is in place.

If washer is in place, you'll notice a hexagon shape cutout. While holding the elbow and cap at the same time, using an allen wrench, head of a bolt or a standard screwdriver, something just big enough to catch the edges, give it a twist clockwise to snug up the connection. The elbow is a two-piece interlocking mechanism and may just be a little loose. Replace on manifold.



## Calibration

Chemical labels may show application rates in gallons per acre, gallons per 1000 square feet or gallons per 100 square feet. You will note that the tip chart shows 3 of these rating systems. Once you know how much you are going to spray, then determine (from the tip chart) the spraying pressure (PSI), and the spraying speed (MPH).

Determining the proper speed of the pulling vehicle can be done by marking off 100, 200 & 300 feet. The speed chart indicates the number of seconds it takes to travel the distances. Set the throttle and with a running start, travel the distances. Adjust the throttle until you travel the distances in the number of seconds indicated by the speed chart. Once you have reached the throttle setting needed, mark the throttle location so you can stop and go again, returning to the same speed.

Add water and proper amount of chemical to the tank and drive to the starting place for spraying.

## Using the Boom Nozzles

Four things must be considered before spraying with the boom.

1. How much chemical must be mixed in the tank.
  2. Rate of spray (gallons per acre to be sprayed).
  3. What pressure (p.s.i.) will be used.
  4. Speed traveled (mph) while spraying.
- \* Refer to the chemical label to determine your chemical mixture.
  - \* See the tip chart to determine the pressure to be used. The chart will also show the speed used when spraying.
  - \* Start the pump and open the valve to the boom nozzles.
  - \* Check the spray pattern. Usually you can see the coverage better on a solid concrete surface, such as a driveway.
  - \* Raise or lower the nozzles so that you will have a good coverage pattern. Generally the proper height will be about approx.: 18 to 22 inches from the object(s) being sprayed.

## Maintenance During/After Spraying

Periodically check the strainer and clean the screen on your intake line.

Proper care and maintenance will prolong the life of your sprayer.

After use, drain the tank and store or dispose of chemical properly. Fill the sprayer half way with clean water. Start the pump and allow the water to pump through the entire plumbing system and nozzles. Drain and then refill half full, add the recommended amount of a good quality tank cleaner, such as FIMCO Tank Neutralizer and Cleaner. (If no tank cleaner is available, you may substitute dish soap for this step, about 1-2 oz. per gallon). Turn pump on and circulate through system for 15 minutes and then spray out through boom and handgun nozzles. Refill sprayer half way with clean water and repeat. Follow the chemical manufacturer's disposal instructions of all wash or rinsing water.

If boom or handgun nozzles need cleaning, remove them from the sprayer and soak in warm soapy water. Clean with a soft bristled brush or toothpick if necessary. Never use a metal object. Even the slightest damage can change the flow rate and spray distribution. Water rinse and dry the tips before storing.

**NOTE:** The wheels have grease zerks for bearings. Once a year new grease, a NGLI No. 2 lithium grease, should be added to each wheel.

**WARNING:** Some chemicals will damage the pump valves if allowed to soak untreated for a length of time! ALWAYS flush the pump as instructed after each use. DO NOT allow chemicals to sit in the pump for extended times of idleness. Follow the chemical manufacturer's instructions on disposal of all waste water from the sprayer.

## Winter Storage

Prepare the sprayer for end-of-season storage by running RV antifreeze through the system. This will keep internal parts lubricated, protect against corrosion and keep the unit from freezing. *Note: RV antifreeze is non-toxic and biodegradable and generally safer for the environment than automotive antifreeze.*

Before storing your sprayer for winter or long term storage, thoroughly clean and drain it as much as possible. Then pour enough pink RV antifreeze into the tank so that when the pump is turned on you can pump the antifreeze throughout the entire plumbing system, including the bypass. Make sure to operate the boom and handgun until you see pink fluid spraying from the nozzles. Leave any remaining antifreeze in the tank. Before your next usage, rinse the antifreeze from the sprayer with clean water.

It is nearly impossible to drain all of the water from the sprayer and any trapped water can freeze in cold weather and damage parts of the sprayer. Pumping the antifreeze through the system will displace the water and help prevent this damage.

Removing from storage: drain the antifreeze. Fill the tank with fresh water and run through the system. Dispose of antifreeze and flush water properly.

## Speed Chart

	Time Required in seconds to travel a distance of		
Speed in M.P.H. (Miles Per Hour)	100 Ft.	200 Ft.	300 Ft.
1.0	68 sec.	136 sec.	205 sec.
2.0	34	68	102
3.0	23	45	68
4.0	17	34	51
5.0	14	27	41
6.0	11	23	34
7.0	9.7	19	29
8.0	8.5	17	26
9.0	7.6	15	23
10.0	6.8	14	20

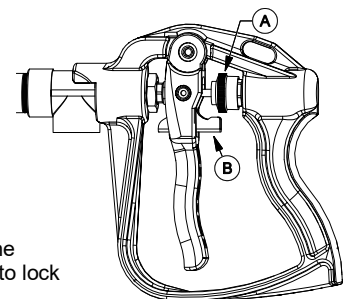
## Spray Tip Rate Chart (20" Spacing)

Tip No.	Pressure (psi)	Capacity (GPM)	Gallons Per Acre - Based on Water						
			1 MPH	2 MPH	3 MPH	4 MPH	5 MPH	6 MPH	8 MPH
AIXR11002VP	15	.12	35.6	17.8	11.8	8.9	7.1	5.9	4.5
	20	.14	41.6	20.8	13.8	10.4	8.3	6.9	5.2
	30	.17	50.4	25.2	16.8	12.6	10.1	8.4	6.3
	40	.20	59.6	29.8	19.8	14.9	11.9	9.9	7.4
Tip No.	Pressure (psi)	Capacity (GPM)	Gallons Per 1000 Sq. Ft. - Based on Water						
			1 MPH	2 MPH	3 MPH	4 MPH	5 MPH	6 MPH	8 MPH
AIXR11002VP	15	.12		.41	.27	.20	.16		
	20	.14		.48	.32	.24	.19		
	30	.17		.58	.39	.29	.23		
	40	.20		.68	.45	.34	.27		

## Long Range Pro Series Handgun

- No Drip Shut Off • Easy Pull Trigger Handle • Chemical Resistant Construction
- 38' Horizontal Throw & 27' Vertical Throw

To adjust the spray pattern, the nut needs to be adjusted (Ref. A). Spinning it off, towards the lever, will make a cone pattern and spinning it on, away from the lever, will make a stream. The lever (Ref. B), is the lock that can be used to lock the lever when pulled, holding the valve open. Squeezing the trigger, will release the lock.

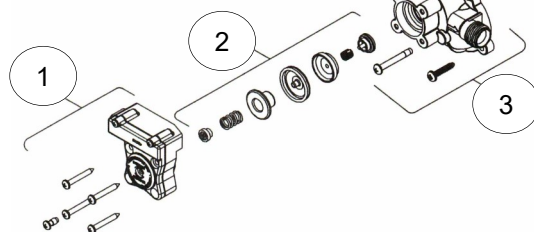


## 4.0 GPM Pump

Model: 5151073

Available Replacement Parts

Ref. #	Mfg. #	Description
1	94-230-55	Switch Assembly
2	94-237-05	Check Valve Assembly
3	94-231-30	Upper Housing
4	94-232-05	Valve Assembly
5	94-238-21	Drive Assembly



**HIGH  
FLO**  
**PRO SERIES**



- Clean and rinse your pump after each use with Fimco Tank Neutralizer
- Winterize your pump or sprayer by rinsing, draining and running RV Antifreeze through it before storing for the winter.
- Use clean water for your spray mixture
- Store inside a building when not in use.



- Use to pump bleach.
- Use with Flammable or Combustible Liquids
- Store Flammable or Combustible Liquids
- Leave your pump sit with spray mixture in it for extended periods
- Use dirty or unfiltered water for spraying

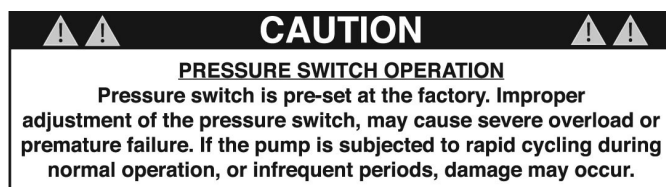
### Troubleshooting the Pump:

Motor does not run:

- Check for loose wiring connection(s).
- Make sure the 'ON/OFF' switch in the lead wire assembly is in the 'ON' position. "I" is the 'ON' position and 'O' is the 'OFF' position.
- Check for defective pressure switch. Make sure you are connected to a good 12 volt power source. Make sure any on/off switches are in the 'on' position.
- Remove the cap to the pressure switch. Pull both red wires off of their terminals, and touch the two ends together. If your pump runs when you do this, your pressure switch will need to be replaced.
- Check the fuse.
- Check for low voltage at the power supply.

Pump does not prime:

- Check for air leaks in supply line.
- Check for debris in the check valve assembly.
- Check for defective check valve.
- Check for clogged strainer/filter.
- Check for cracks in the pump housing.
- Check for empty product supply.



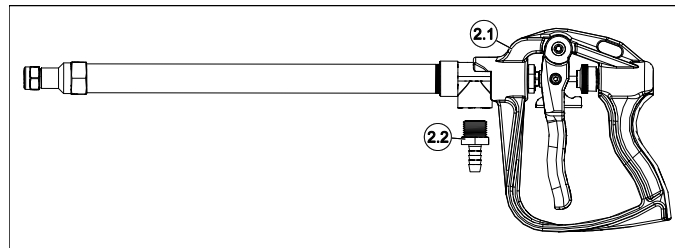
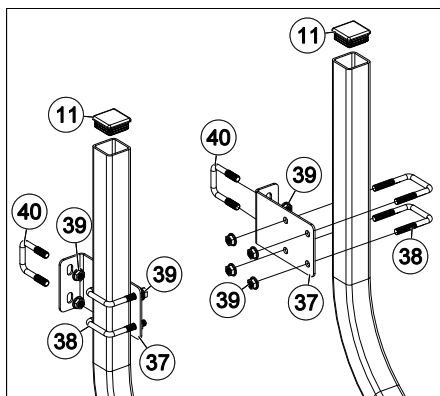
Pulsating flow (surging):

- Check for defective pressure switch.
- Check for leaks in the discharge line.
- Check for restriction in the discharge line.
- Check for debris in nozzle orifice.
- Discharge hose may be too long.
- Check for clogged strainer.

Motor continues to run after discharge is shut off:

- Check for empty product supply.
- Check for open bypass valve. (if equipped)
- Check for low voltage.
- Check for leak in discharge line.
- Check for defective or dirty check valve.
- Check for defective pressure switch.



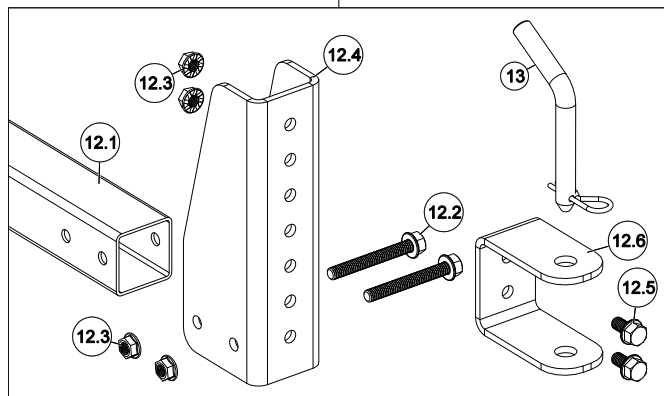
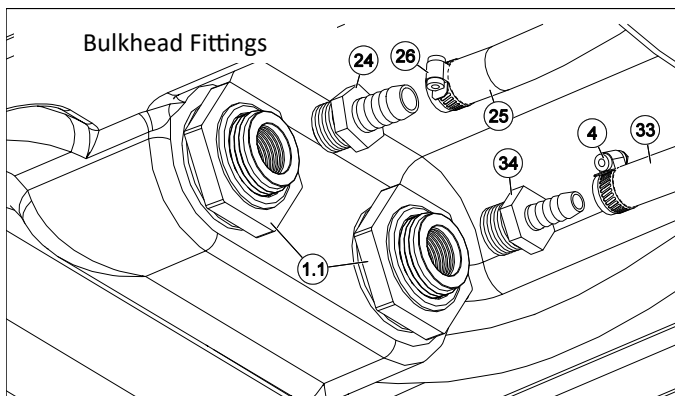
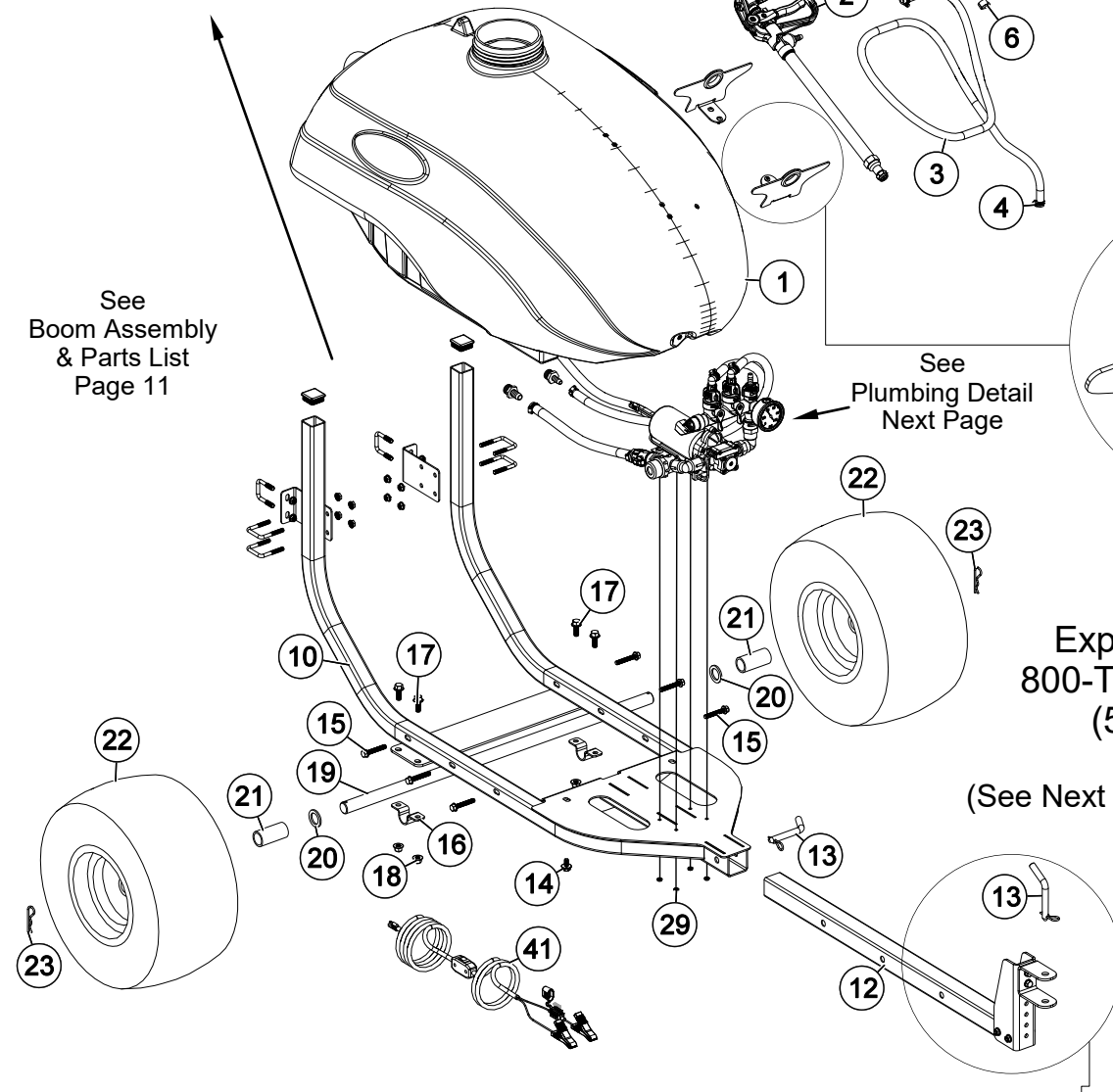


See  
Boom Assembly  
& Parts List  
Page 11

See  
Plumbing Detail  
Next Page

# Exploded View 800-TRL50PROST (5303056)

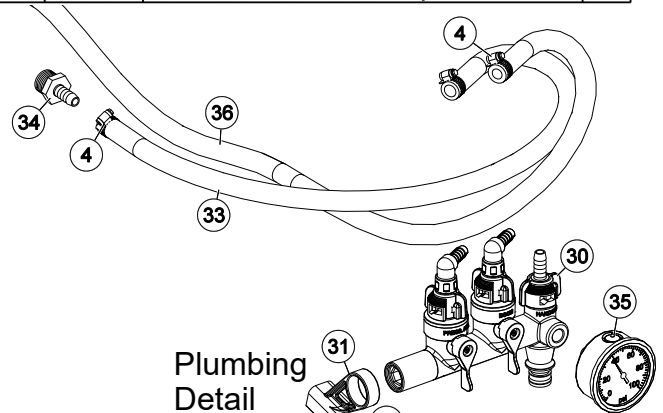
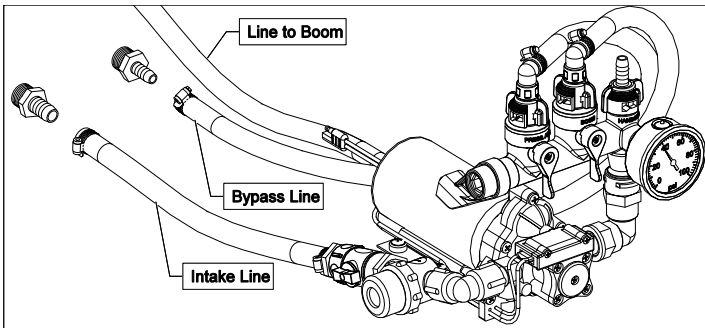
(See Next Page for Parts List)



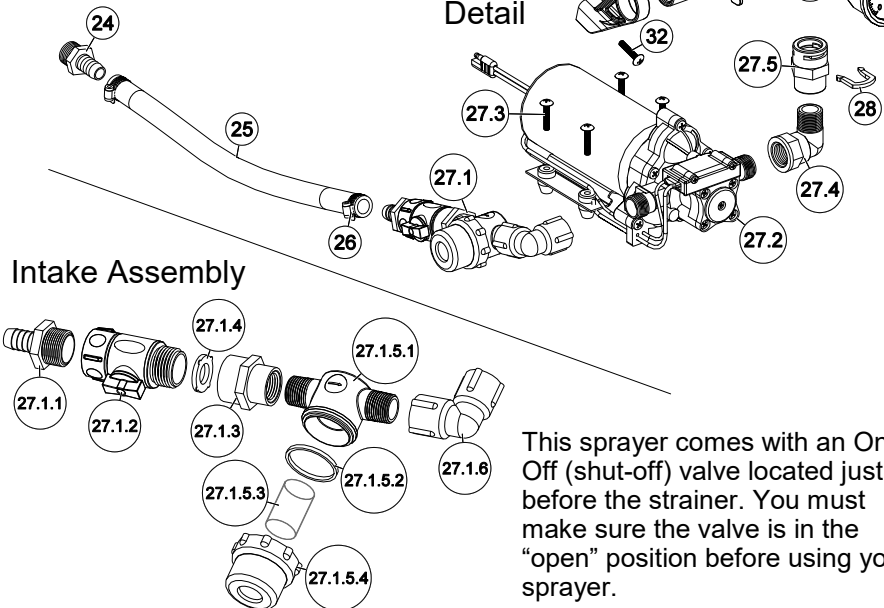
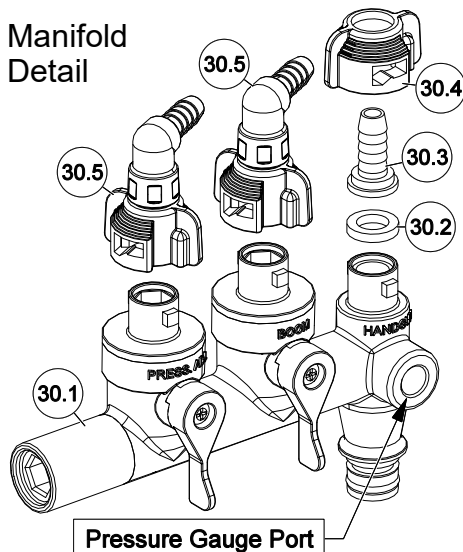
## Parts List: 800-TRL50PROST (5303056)

Ref. #	Part #	Description	Qty
1	5169336	50 Gal. Trailer Tank	1
1.1	TF50DTN	Polypro 1/2" Fem Bulkhead Fitting	2
2	5163150	22" HP Spray Gun with 3/8" Hose Barb	1
2.1	5163136	High Pressure Aluminum Spray Gun 22"	1
2.2	5067130	Poly Fitting, 1/2" MNPT x 3/8" HB	1
3	5020527	Hose, 3/8"-1 Brd. x 25 Ft.	1
4	5051144	Hose Clamp, 3/8"	6
5	5058200	32 oz -1000 ml Multi-LID	1
6	5051122	5/8" Black Nylon Loom Cable Clamp	1
7	5117234	#10-24 x 1/2" Phillips Truss Head Machine Screw	5
8	5038923	HP Gun Hose Wrap Bracket Upper	2
9	5075014	Rubber Grommet (Black)	2
10	5281294	50 Gal. Trailer Frame	1
11	5046425	Square Cap, Black (1 1/2" Square Tube)	2
12	5281295	Tongue Assembly 50 Gal. Trailer	1
12.1	5100952	50 Gal. Trailer Tongue	1
12.2	5034642	H.H.C.S. Flanged 5/16"-18nc x 2 1/2"	2
12.3	5006307	5/16-18nc Hex Flanged Whiz Nut Gr. 5	4
12.4	5038776	Hitch Bracket	1
12.5	5034634	H.H.C.S. Flanged 5/16"-18nc x 5/8"	2
12.6	5038777	Hitch	1
13	5101202	Bent Clevis Pin (1/2" Dia.) w/Clip	2
14	5034531	5/16"-18 x 5/8" Flange Lock Screw	2
15	5034640	H.H.C.S. Flanged 5/16"-18nc x 2"	6
16	5051160	1" Axle Clamp	2
17	5117307	H.H.C.S. Flanged 3/8"-16nc x 1"	4
18	5006345	3/8-16nc Hex Flanged Toplock Nut Gr. 5	4
19	5024138	1" Axle Shaft	1
20	5041113	Machinery Bushing, 1 1/2" O.D. x 1" I.D. x 10 Ga.	2
21	5127236	Axle Spacer - 1" SCH 40 RPVC X 2.6875"	2
22	5021163	18 X 8.5 X 8 Tire w/1" Needle Bearing	2
23	5101065	#211 Hitch Pin Clip (Zinc Plated)	2
24	5067131	Poly Fitting, 1/2" MNPT x 1/2" HB	1
25	5020591	1/2" Polyspring Hose X 16"	1
26	5051114	Hose Clamp, 1/2"	2
27	5281299	PRO SERIES 4.0 Pump Assembly	1

Ref. #	Part #	Description	Qty
27.1	5281298	Strainer Valve Assembly	1
27.1.1	5067121	Poly Hose Fitting, 3/4" MGHT 1/2" HB	1
27.1.2	5143419	Swivel Shut-Off	1
27.1.3	5005190	Poly Adapter Coupler, 3/4" FGHT x 1/2" FNPT	1
27.1.4	5016066	Garden Hose Washer	1
27.1.5	5116417	Poly Inline Strainer 1/2 MNPT	1
27.1.5.1	5046451	Poly Strainer Cap	1
27.1.5.2	5072533	Strainer O-Ring	1
27.1.5.3	5116452	Strainer Screen	1
27.1.5.4	5058205	Clear Strainer Bowl	1
27.1.6	5010236	Poly Elbow, 1/2" FNPT x 1/2" FNPT	1
27.2	5151073	PRO SERIES 12V, 4.0 GPM, 45 psi Pump	1
27.3	5117168	#10-24 x 1" Phillips Truss Head Machine Screw	4
27.4	5010243	Poly Street Elbow, (90 Deg) 1/2" MNPT x 1/2" FNPT	1
27.5	5005456	3/4" Port to 1/2" Female NPT Adapter	1
28	5005457	Port Adapter Clip	1
29	5006186	#10-24 H13/64 Hex Flange Locknut	4
30	5302351	Quick Connect Manifold Assembly	1
30.1	5302347	Quick Connect Manifold	1
30.2	5143430	Flat Washer - Hose Barb Seal	1
30.3	5143431	QC Manifold - 3/8" Hose Straight Barb	1
30.4	5143429	Quick Connect Quarter Turn Cap	1
30.5	5302802	QC Manifold 3/8 Swivel 90° Elbow Assembly	2
31	5143422	Quick Connect Manifold - Support Bracket	1
32	5117168	#10-24 x 1" Phillips Truss Head Machine Screw	1
33	5020157	Hose, 3/8"-1 Brd. x 32"	1
34	5067130	Poly Fitting, 1/2" MNPT x 3/8" HB	1
35	5167108	2 1/2" Liquid Filled 100# Back Mount Gauge	1
36	5020130	Hose, 3/8"-1 Brd. x 78"	1
37	5095944	50 Gal. Trailer Boom Mount	2
38	5034832	Square U-Bolt, 5/16-18" x 1 9/16" x 2 3/16"	4
39	5006307	5/16-18nc Hex Flanged Whiz Nut Gr. 5	12
40	5034159	Square U-Bolt, 5/16" x 1 5/16" x 1 7/8"	2
41	5277040	Lead Wire Assembly (14 ga, w/Switch), 120"	1
42	5301897	Generic 7-Nozzle Boom Assembly	1

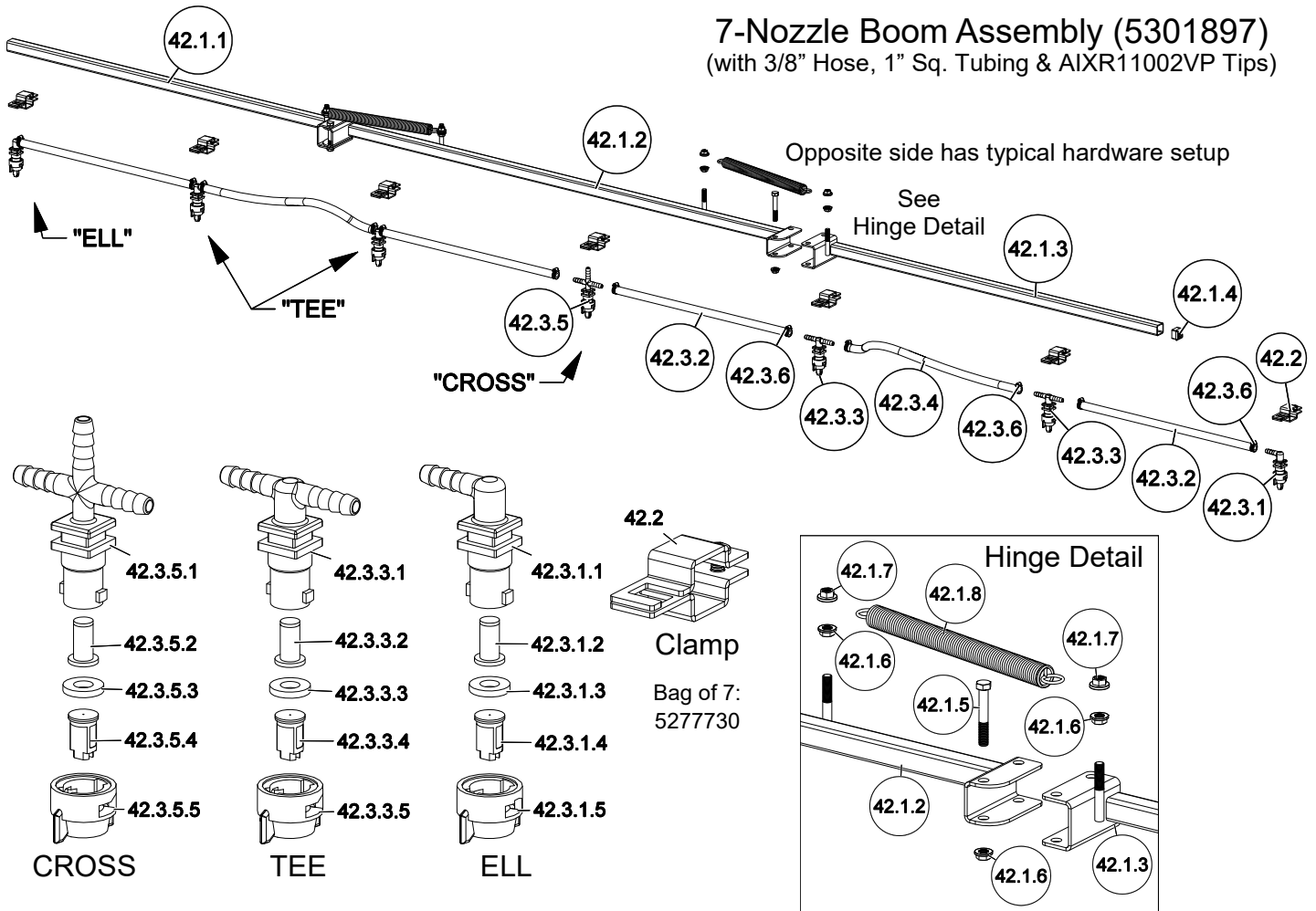


### Manifold Detail



This sprayer comes with an On/Off (shut-off) valve located just before the strainer. You must make sure the valve is in the "open" position before using your sprayer.

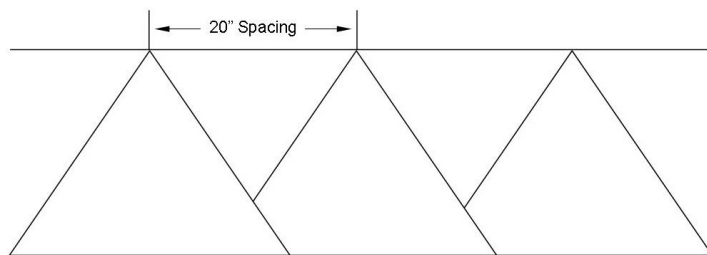
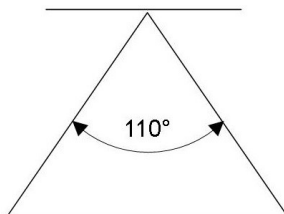
## 7-Nozzle Boom Assembly (5301897) (with 3/8" Hose, 1" Sq. Tubing & AIXR11002VP Tips)



Ref. #	Part #	Description	Qty
42	5301897	Generic 7-Nozzle Boom Assembly	1
42.1	5277780	7-Nozzle Boom Assembly	1
42.1.1	5277837	Outer Boom Weldment (LH) (1" Sq Tube)	1
42.1.2	5277838	Center Boom Weldment 1" Sq. Tube	1
42.1.3	5277836	Outer Boom Weldment (RH) (1" Sq Tube)	1
42.1.4	5046106	Square Cap, Black (1" Square Tube)	2
42.1.5	5034169	H.H.C.S., 3/8"-16 x 2 1/2"	2
42.1.6	5006345	3/8"-16 Flange Locknut (Grade F)	5
42.1.7	5006259	3/8"-16 Hex Whiz (Flange) Locknut	4
42.1.8	5019228	Extension Spring	2
42.2	5277923	Nozzle Clamp, 1"	7
42.3	5277696	7-Nozzle Harness (3/8")	1
42.3.1	5277689	"ELL" Nozzle Sub-Assembly (3/8")	2
42.3.1.1	5056113	Single Hose Shank (3/8" Hose)	1
42.3.1.2	5143543	Check Valve Strainer, 50 Mesh, 5 PSI	1
42.3.1.3	5016157	Seat Washer (QJ Caps)	1
42.3.1.4	5018371	Air-Induction XR Flat Spray Tip (AIXR11002VP)	1

Ref. #	Part #	Description	Qty
42.3.1.5	5046219	Quick TeeJet Cap ONLY (Yellow)	1
42.3.2	5020510	Hose, 3/8"-1 Brd. x 19-3/8"	4
42.3.3	5277690	"TEE" Nozzle Sub-Assembly (3/8")	4
42.3.3.1	5056114	Double Hose Shank (3/8" Hose)	1
42.3.3.2	5143543	Check Valve Strainer, 50 Mesh, 5 PSI	1
42.3.3.3	5016157	Seat Washer (QJ Caps)	1
42.3.3.4	5018371	Air-Induction XR Flat Spray Tip (AIXR11002VP)	1
42.3.3.5	5046219	Quick TeeJet Cap ONLY (Yellow)	1
42.3.4	5020534	Hose, 3/8"-1 Brd. x 21"	2
42.3.5	5277691	"Cross" Nozzle Sub-Assembly (3/8")	1
42.3.5.1	5056115	Triple Hose Shank (3/8" Hose)	1
42.3.5.2	5143543	Check Valve Strainer, 50 Mesh, 5 PSI	1
42.3.5.3	5016157	Seat Washer (QJ Caps)	1
42.3.5.4	5018371	Air-Induction XR Flat Spray Tip (AIXR11002VP)	1
42.3.5.5	5046219	Quick TeeJet Cap ONLY (Yellow)	1
42.3.6	5051144	Hose Clamp, 3/8"	12

Based on the minimum overlap required to obtain uniform distribution with 110° tips and 20" spacing.  
Suggested Minimum Spray Height: 16"-18" above what is being sprayed (to plant, not ground).  
Optimum Spray Height: 20"



- 110° wide, tapered flat spray angle with air induction technology for better drift management
- Made of 2-piece UHMWPE polymer construction which provides excellent chemical resistance, including acids, as well as exceptional wear life
- Compact size to prevent tip damage
- Excellent for systemic products and drift management

# Warranty

## LIMITED WARRANTY FOR NEW FIMCO, IND. EQUIPMENT

**WHO MAY USE THIS LIMITED WARRANTY.** This limited warranty (the “Limited Warranty”) is provided by Fimco, Ind. to the original purchaser (“you”) of the Equipment (as defined below) from Fimco, Ind. or one of Fimco, Ind.’s authorized dealers. This Limited Warranty does not apply to any subsequent owner or other transferee of the Equipment. THIS LIMITED WARRANTY GIVES YOU SPECIFIC LEGAL RIGHTS, AND YOU MAY ALSO HAVE OTHER RIGHTS WHICH VARY FROM STATE TO STATE.

**WHAT THIS LIMITED WARRANTY COVERS AND FOR HOW LONG.** Fimco, Ind. warrants that any new Equipment will be free from defects in material and workmanship for a period of **one (1) year** (homeowner), **90 days** (commercial user), after delivery of the Equipment to you (the “Warranty Period”). The Warranty Period is not extended if Fimco, Ind. repairs or replaces the Equipment.

**WHAT IS NOT COVERED BY THIS LIMITED WARRANTY.** This Limited Warranty does not apply to: (1) used Equipment; (2) any Equipment that has been altered, changed, repaired or treated since its delivery to you, other than by Fimco, Ind. or its authorized dealers; (3) damage or depreciation due to normal wear and tear; (4) defects or damage due to failure to follow Fimco, Ind.’s operator’s manual, specifications or other written instructions, or improper storage, operation, maintenance, application or installation of parts; (5) defects or damage due to misuse, accident or neglect, “acts of God” or other events beyond Fimco, Ind.’s reasonable control; (6) accessories, attachments, tools or parts that were not manufactured by Fimco, Ind., whether or not sold or operated with the Equipment; or (7) rubber parts, such as tires, hoses and grommets.

**HOW TO OBTAIN WARRANTY SERVICE.** To obtain warranty service under this Limited Warranty, you must (1) provide written notice to Fimco, Ind. of the defect during the Warranty Period and within **thirty (30)** days after the defect becomes apparent or the repair becomes necessary, at the following address: Fimco, Ind., 1000 Fimco Lane, North Sioux City, SD 57049; and (2) make the Equipment available to Fimco, Ind. or an authorized dealer within a reasonable period of time. For more information about this Limited Warranty, please call: **800-831-0027**.

**WHAT REMEDIES ARE AVAILABLE UNDER THIS LIMITED WARRANTY.** If the conditions set forth above are fulfilled and the Equipment or any part thereof is found to be defective, Fimco, Ind. shall, at its own cost, and at its option, either repair or replace the defective Equipment or part. Fimco, Ind. will pay for shipping and handling fees to return the repaired or replacement Equipment or part to you.

**LIMITATION OF IMPLIED WARRANTIES AND OTHER REMEDIES.** THE REMEDIES DESCRIBED ABOVE ARE YOUR SOLE AND EXCLUSIVE REMEDIES, AND FIMCO, IND.’S SOLE LIABILITY, FOR ANY BREACH OF THIS LIMITED WARRANTY. TO THE EXTENT APPLICABLE, ANY IMPLIED WARRANTIES, INCLUDING, WITHOUT LIMITATION, THE IMPLIED WARRANTIES OF MERCHANTABILITY AND FITNESS FOR A PARTICULAR PURPOSE, SHALL BE LIMITED IN DURATION TO THE WARRANTY PERIOD, AND THE REMEDIES AVAILABLE FOR BREACH THEREOF SHALL BE LIMITED TO THE REMEDIES AVAILABLE UNDER THIS EXPRESS LIMITED WARRANTY. SOME STATES DO NOT ALLOW LIMITATIONS ON HOW LONG AN IMPLIED WARRANTY LASTS, SO THE ABOVE LIMITATION MAY NOT APPLY TO YOU. IN NO EVENT SHALL FIMCO, IND.’S LIABILITY UNDER THIS LIMITED WARRANTY EXCEED THE ACTUAL AMOUNT PAID BY YOU FOR THE DEFECTIVE EQUIPMENT, NOR SHALL FIMCO, IND. BE LIABLE, UNDER ANY CIRCUMSTANCES, FOR ANY CONSEQUENTIAL, INCIDENTAL, SPECIAL OR PUNITIVE DAMAGES OR LOSSES, WHETHER DIRECT OR INDIRECT. SOME STATES DO NOT ALLOW THE EXCLUSION OR LIMITATION OF INCIDENTAL OR CONSEQUENTIAL DAMAGES, SO THE ABOVE LIMITATION OR EXCLUSION MAY NOT APPLY TO YOU.

Typical Spray Pattern  
(7-Nozzle Boom)

